

**Rice Cooker and Steamer ..... 2**  
USA: 1-800-851-8900

Canada : 1-800-267-2826

840120500

## IMPORTANT SAFEGUARDS

When using your electrical appliances, basic safety precautions should always be followed, including the following:

1. Read all instructions.
2. Do not touch hot surfaces. Use pot holders when removing hot containers.
3. To protect against a risk of electrical shock do not immerse cord, plug or base in water or other liquid.
4. Close supervision is necessary when any appliance is used by or near children.
5. Unplug from outlet when not in use. Unplug before putting on or taking off parts and allow to cool before cleaning.
6. Do not operate any appliance with a damaged cord or plug or after the appliance malfunctions, has been dropped or damaged in any manner. Call our toll-free customer service number for information on examination, repair or adjustment.
7. The use of accessory attachments not recommended by Hamilton Beach/Proctor-Silex, Inc. may cause hazards.
8. Do not use outdoors.
9. Do not let cord hang over edge of table or counter, or touch hot surfaces.
10. Do not place on or near a hot gas or an electric burner, or in a heated oven.
11. Extreme caution must be used when moving an appliance containing hot food, water, or other hot liquids.
12. To disconnect, pickup the switch, then remove plug from wall outlet.
13. Do not use appliance for other than intended use.
14. Lift and open cover carefully to avoid scalding, and allow water to drip into the cooker.
15. **Caution:** To reduce risk of electric shock, cook only in removable container.

**SAVE THESE INSTRUCTIONS!**

## CONSUMER SAFETY INFORMATION

**This appliance is intended for household use only.**

This appliance is equipped with a polarized plug. This type of plug has one blade wider than the other. The plug will fit into an electrical outlet only one way. This is a safety feature intended to help reduce the risk of electrical shock. If you are unable to insert the plug into the outlet, try reversing the plug. If the plug should still fail to fit, contact a qualified electrician to replace the obsolete outlet. Do not attempt to defeat the safety purpose of the polarized plug by modifying the plug in any way.

The length of the cord used on this appliance was selected to reduce the hazards of becoming tangled in, or tripping over a longer cord. If a longer cord is necessary an approved extension cord may be used. The electrical rating of the extension cord must be equal to or greater than the rating of the rice cooker. Care must be taken to arrange the extension cord so that it will not drape over the countertop or table-top where it can be pulled on by children or accidentally tripped over.

Do not place the unit directly under cabinets when operating as this product produces large amounts of steam. Avoid reaching over the product when operating.

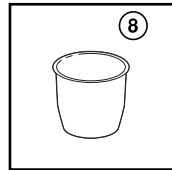
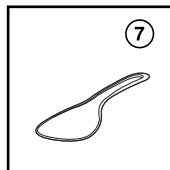
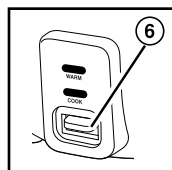
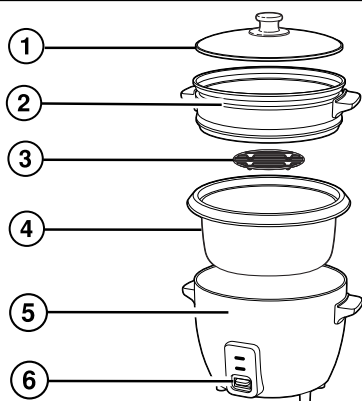
### COOKING CHART

Cup measures		Cooking Time (minutes)	Yield: 8 oz. (250 ml) cups of cooked rice
Uncooked Rice	Water		
1 (250 ml)	2 (500 ml)	20 to 30	2½-3 (625-750 ml)
2 (500 ml)	4 (1 L)	25 to 40	4½-6 (1.125-1.5 L)
3 (750 ml)	6 (1.5 L)	35 to 50	8-10 (2-2.5 L)

---

## Parts and Features

1. Cover
2. Steam Basket
3. Steam Rack
4. Inner Pot
5. Base
6. Warm/Cook Switch
7. Rice Paddle
8. 6-ounce (175 ml) Plastic Measure



---

## To Cook Rice

There are many types of rice. The amounts and times listed in the Cooking Chart refer to uncooked, raw, white rice. You may use converted rice but **do not use quick-cooking or instant rice.**

Standard proportions for cooking rice are **2 parts water to 1 part rice.** Amounts of water can be adjusted to your personal preference. For moister rice, use more water. For a firmer rice, use less water.

1. Determine amount of cooked rice needed. Using cooking chart, add recommended measures of rice and water to inner pot. Do not exceed max fill line.
2. Spray inner pot with cooking oil spray.
3. Carefully place inner pot straight down into base. Make sure inner pot is securely seated into base.
4. Place cover on inner pot. Plug cord into outlet. The Keep Warm indicator light will come on. **BUT THE UNIT IS NOT COOKING.**
5. Push the switch **DOWN** to start cooking. The **COOK** indicator light will come on.
6. The rice will be done according to the time listed on Cooking Chart. The Keep Warm indicator light will come on when the rice is finished cooking. The Keep Warm feature will continue to keep the rice warm until the unit is unplugged.
7. Use the rice paddle to scoop out the cooked rice. When finished, unplug from outlet.

---

## To Use the Steam Basket

1. Pour about 2 cups (500 ml) water into inner pot.
2. Carefully place inner pot straight down into base. Make sure inner pot is securely seated into base.
3. Place food into steam basket and place steam basket on inner pot. Cover and plug cord into outlet. The Warm indicator light will come on.
4. Push the switch **Down** to start cooking.
5. Steam will be produced in about 8 minutes. Two cups of water will steam for about 30 minutes. When finished unplug from outlet.

**USE CAUTION WHEN REMOVING COVER AND STEAM BASKET. STEAM CAN CAUSE BURNS.**

---

## To Use the Steam Rack

1. Pour about 1 cup (250 ml) of water into inner pot.
2. Carefully place inner pot straight down into base. Make sure inner pot is securely seated into base.
3. Place steam rack in bottom center of inner pot.
4. Place food on steam rack. Cover and plug cord into outlet. The Warm indicator light will come on.
5. Push the switch Down to start cooking.
6. Steam will be produced in about 8 minutes. One cup of water will steam for about 30 minutes. When finished unplug from outlet.

**USE CAUTION WHEN REMOVING COVER AND STEAM RACK. STEAM CAN CAUSE BURNS.**

---

## Cleaning the Cooker

1. Unplug cord from wall outlet.
2. Wash inner pot, cover, steam basket, steam rack, plastic measure and paddle in hot, soapy water. Soaking inner pot in hot, soapy water may be necessary. Do not wash in dishwasher.
3. Rinse, dry and reassemble to store.
4. Wipe base with a soft, damp cloth, or a scrub pad safe for all surfaces. Do not clean with abrasive cleansers.

**Warning:** To reduce the risk of electrical shock do not immerse base in water.

HAMILTON BEACH ♦ PROCTOR-SILEX, INC.  
263 Yadkin Road, Southern Pines, NC 28387

PROCTOR-SILEX CANADA, INC.  
Picton, Ontario K0K 2T0

840120500

hamiltonbeach.com • proctorsilex.com  
hamiltonbeach.com.mx • proctorsilex.com.mx

12/03

---

## Customer Service

If you have a question about your product, call our toll-free customer service number. Before calling, please note the model, type, and series numbers and fill in that information below. These numbers can be found on the bottom of your product. This information will help us answer your question much more quickly.

**MODEL:** \_\_\_\_\_ **TYPE:** \_\_\_\_\_ **SERIES:** \_\_\_\_\_

**This warranty applies to product purchased in the U.S. or Canada.**

### LIMITED WARRANTY

This product is warranted to be free from defects in material and workmanship for a period of two (2) years for Hamilton Beach Portfolio products, one (1) year for Hamilton Beach products or one hundred eighty (180) days for Proctor-Silex products from the date of original purchase, except as noted below. During this period, we will repair or replace this product, at our option, at no cost. THE FOREGOING WARRANTY IS IN LIEU OF ANY OTHER WARRANTY, WHETHER EXPRESS OR IMPLIED, WRITTEN OR ORAL INCLUDING ANY WARRANTY OF MERCHANTABILITY OR FITNESS FOR A PARTICULAR PURPOSE. ANY LIABILITY IS EXPRESSLY LIMITED TO AN AMOUNT EQUAL TO THE PURCHASE PRICE PAID, AND ALL CLAIMS FOR SPECIAL, INCIDENTAL AND CONSEQUENTIAL DAMAGES ARE HEREBY EXCLUDED. There is no warranty with respect to the following, which may be supplied with this product: glass parts, glass containers, cutter/strainer, blades, and/or agitators. This warranty extends only to the original consumer purchaser and does not cover a defect resulting from abuse, misuse, neglect, use for commercial purposes, or any use not in conformity with the printed directions. This warranty gives you specific legal rights, and you may also have other legal rights which vary from state to state, or province to province. Some states or provinces do not allow limitations on implied warranties or special, incidental or consequential damages, so the foregoing limitations may not apply to you.

If you have a claim under this warranty, DO NOT RETURN THE APPLIANCE TO THE STORE! Please call our CUSTOMER SERVICE NUMBER. (For faster service please have model, series, and type numbers ready for operator to assist you.)

### CUSTOMER SERVICE NUMBERS

In the U.S. 1-800-851-8900

In Canada 1-800-267-2826

**hamiltonbeach.com or proctorsilex.com**

**KEEP THESE NUMBERS FOR FUTURE REFERENCE!**